

Technical data sheet

Product features



Electric fryer 19,8 kW

Model	SAP Code	00008460
--------------	-----------------	----------



- Basin volume [l]: 13+13
- Drain type: Trough the cabinet
- Safety drain: Yes
- Maximum device temperature [°C]: 190
- Minimum device temperature [°C]: 50
- Material: AISI 304 top plate and cladding
- Heating location: Inside the tank
- Number of baskets: 2
- Basket size [mm]: 2x 215 x 300 x 120

SAP Code	00008460	Loading	400 V / 3N - 50 Hz
Net Width [mm]	800	Basin volume [l]	13+13
Net Depth [mm]	730	Number of basins	2
Net Height [mm]	900	Number of baskets	2
Net Weight [kg]	81.00	Basket size [mm]	2x 215 x 300 x 120
Power electric [kW]	19.800	Ratio power/volume [kW/l]	0.96

Technical data sheet

Technical drawing

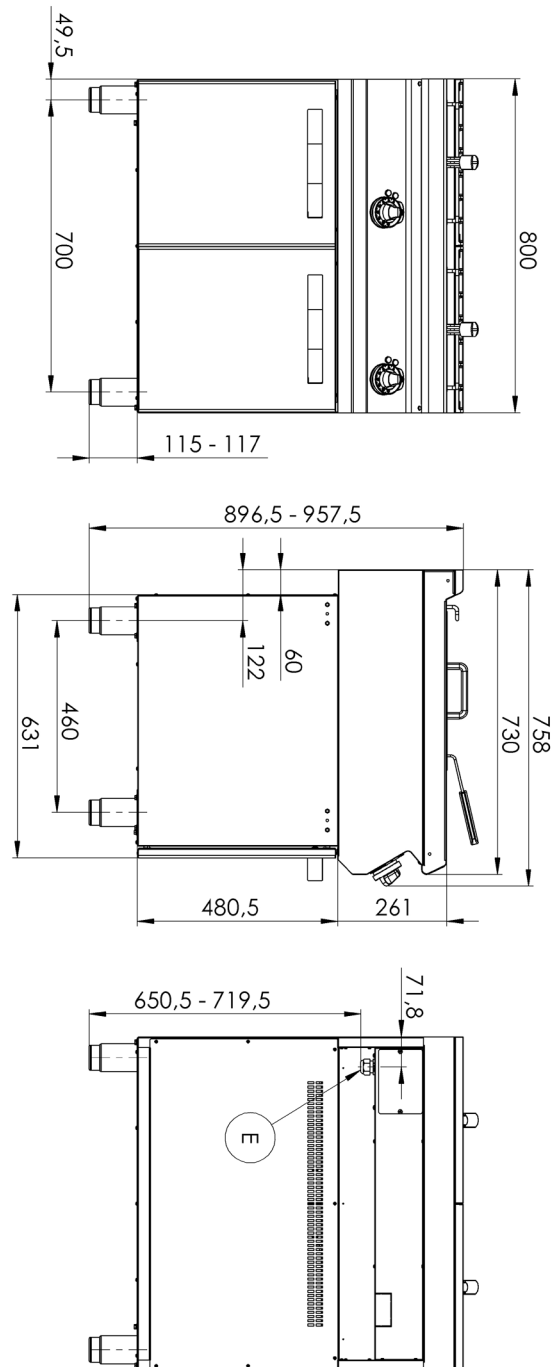


Electric fryer 19,8 kW

Model

SAP Code

00008460



Technical data sheet

Technical parameters



Electric fryer 19,8 kW

Model

SAP Code

00008460

1. SAP Code:

00008460

2. Net Width [mm]:

800

3. Net Depth [mm]:

730

4. Net Height [mm]:

900

5. Net Weight [kg]:

81.00

6. Gross Width [mm]:

840

7. Gross depth [mm]:

800

8. Gross Height [mm]:

1065

9. Gross Weight [kg]:

94.00

10. Device type:

Electric unit

11. Construction type of device:

With substructure

12. Power electric [kW]:

19.800

13. Loading:

400 V / 3N - 50 Hz

14. Protection of controls:

IPX4

15. Exterior color of the device:

Stainless steel

16. Material:

AISI 304 top plate and cladding

17. Indicators:

operation and warm-up

18. Worktop type:

Molded - comfortable cleaning maintenance

19. Worktop material:

AISI 304

20. Worktop Thickness [mm]:

1.50

21. Device heating type:

Direct

22. Standard equipment for device:

lid and basket

23. Basin volume [l]:

13+13

24. Basin dimensions [mm x mm x mm]:

265 x 346 x 200

25. Maximum device temperature [°C]:

190

26. Minimum device temperature [°C]:

50

27. Safety thermostat:

Yes

28. Safety thermostat up to x ° C:

235

Technical data sheet

Technical parameters



Electric fryer 19,8 kW

Model

SAP Code

00008460

29. Adjustable feet:

Yes

30. Heating element material:

AISI 304

31. Number of baskets:

2

32. Number of basins:

2

33. Basket size [mm]:

2x 215 x 300 x 120

34. Basin material:

AISI 304 - High quality stainless steel

35. Ratio power/volume [kW/l]:

0.96

36. Drain type:

Trough the cabinet

37. Safety drain:

Yes

38. Heating location:

Inside the tank

39. Cross-section of conductors CU [mm²]:

10

- Výkon (kW): 5,7-6,6 (230 V); 9,8-11 (400 V)